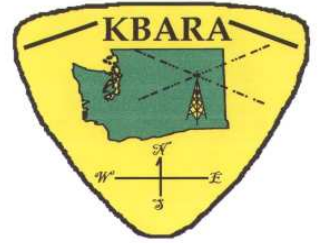




KBARA GAZETTE



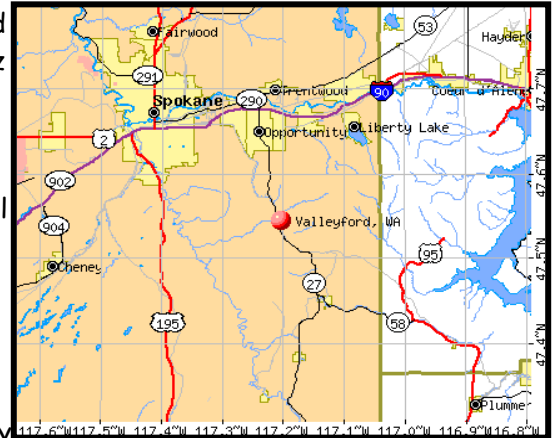
Summer, 2008

The Quarterly Journal of the
Kamiak Butte Amateur Repeater Association
KBARA, PO Box 30801, Spokane WA 99223-3013

From the KBARA Editor: Wes, KD7HGG
The ARRL Field Day this year will be a 4 club sponsored event on June 28-29, 2008. This is from Charles, KG8ZK, Spokane County ARES AEC & Group Field Day Co-Chairman:

Here's the scoop that we have available. Field Day set-up will be held from Friday night 7PM, June 27, to the time we set off operating on Saturday, June 28. It will be attended by four clubs: Lilac City ARC, Inland Empire Radio Amateurs, Spokane County ARES/RACES and KBARA. We will be running a 4A station from Valleyford Park, WA. The station call sign will be N7LC, courtesy of the Lilac City ARC. The Lilac City group also has agreed to provide the hamburgers, hot dogs and condiments for the event. Lilac City would love to have a head count as to who will be there for lunch/dinner. Please bring a salad or dessert if you are attending. Also SPOKANE County ARES will be having their annual picnic at this event. Our main idea is to get 4 of the amateur radio groups together to have a wonderful Field Day. The 4A station, as we speak, will consist of 2 HF voice and 2 HF digital. We also will be using battery power. If anyone wants to bring generator power, we have no problems with that. So bring your gear and come join us on Friday night for set-up of Field Day 2008 in Valleyford Park. Everyone may or may not know where Valleyford Park is. Well it's located in Valleyford, Washington on the Palouse Highway, between Mica, Washington to the east and the lower South Hill area of the city of Spokane, Washington. If you're traveling west from highway 27 on the Palouse highway, you will pass Fire District 8 HQ's on the south side of the road. Once you pass the fire station, approximately 1/4 to 1 mile west you will see a reddish brown garage type barn on the south side of the road. As soon as you see it, the entrance to the park will be right there. There aren't any permanent park entrance markings to be had. The talk in frequency will be 146.880 with a - 600 kHz

offset and a 123.0 Hz tone. So hopefully this is what you'll need. If there are any questions, I can be reached by



cell phone at (509) 294-3050, 294-3050 or by landline at (509) 921-6552. Please be patient as to an answer there because it is also rings my wife's cell phone. But either will work. Also, I can be contacted on the air by calling me on the 147.300 SPOKANE CTY ARES/RACES repeater. I monitor some frequencies by scanner so if I hear my call sign on the 147.380, I'll switch over. 73 for now.
Charles, KG8ZK



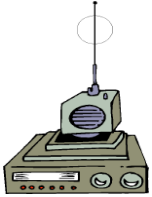
From Mike, N1NG

Hi everybody,
The FAA (yes FAA, not the FCC) approved and formally executed the site license at Mica Peak, so the 70cm repeater is now operational at Mica Peak.

As you know, it used to be located at my residence on the South Hill. That location was good for EchoLink, poor for propagation. Once I get my hands on two 1.25 radios, I plan to "beam" EchoLink up to Mica Peak much the same way I currently do with IRLP. What all of this means is the repeater is working, but is not tied to EchoLink.

I still have some fine tuning yet to do on the audio, but it is available for your use. The frequency and tone are the same:
444.35+, 192.8
Please enjoy,

73,
Mike Maxson, N1NG



Northern Rep Report
By: Jan VE7QE & Roy VE7IS
Okanagan Falls, BC Canada

It's been a while since we submitted anything for the newsletter. Now that summer has approached us, we wanted to remind people that our annual "Christina Lake Amateur Radio Picnic & Campout", with a "Huckleberry Pancake Breakfast" will not be taking place this year. Unfortunately, no one has come forward to take on this great event. We want to thank all those who attended over the last 9 years. We never expected this to become as big as it did. We had a lot of people lend a hand and we want to thank them for pitching in. If it weren't for them, it wouldn't have been so successful. Those people who attended made it worth while. We've met a lot of wonderful people, both ham radio and non ham radio. Now that we no longer host this event, our plans are to attend as many other events as we can. We look forward to meeting new people who we haven't met face to face yet.

We will be attending the KBARA campout at Boyer Park in July. Let's make this event a successful one as well. Come join everyone for a fantastic weekend, even if you can only make it for the day. Hope to see several people there. It sounds like a great place with plenty to do.

We will be attending the 39th Annual Wenatchee Hamfest on June 6th, 7th, and 8th 2008 at the Dryden Gun Club. This is a great place to just sit back, relax and enjoy the activities. We've had a great time over

the past 7 or 8 years that we've been there. Maybe we'll see some of you there as well.

We hope everyone has a fantastic summer. Ours is a very busy one as usual, but we enjoy it. The biggest event for us will be Roy's folks 70th Anniversary in August.

73,
Jan VE7QE & Roy VE7IS



Attention all life members of KBARA: Due to increasing costs of providing the newsletter, we have initiated a new policy. You will still be a life member and thank you for your past services. You can receive the newsletter free via the Internet by providing us with your e-mail address, or downloading it at www.kbara.org. However, if you wish the newsletter mailed to you, we ask for \$5.00 per year to cover the costs.

Thanks



Some handiwork from Ken, KD7DDQ:

Here is the fiberglass cover for the Mica Peak link antenna pointed at the Lookout Pass repeater. I engineered it from scratch, including hand carving the mold. I used a cheese grater to whittle a piece of 4' x 2' x 4'' fiberglass. I then took that to make a form, and painted it with three coats of regular house paint. I used a spray gun to apply the parting wax (the wax can be bought at any shop in the market). After the wax dried, I painted the resin on the fiberglass form.

I laid about one sheet of fiberglass cloth on the



form, and



Kamiak Butte Amateur Repeater Association Camp Out & Annual Meeting, July 11 -13, 2008

All are welcome!



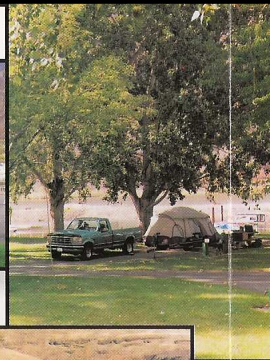
Here's your chance to eye-ball each other, along with camping, swimming, fishing, schmoozing & just generally Hamming it up. This is an annual Ham-O-Rama & summer bash. Do not miss it!

The Port of Whitman County maintains Boyer Park and Marina which is leased from the U.S. Army Corps of Engineers. The park has a full-time supervisor and concessionaire ready and willing to help with the needs of recreational enthusiasts.

The Marina provides free launching alongside a service dock where gasoline is available. Moorages conveniently accommodate 150 boats and can be rented on a daily or monthly basis.

Boyer Park Boatel offers four pleasant rooms for your overnight stay. A fully accessible boatel room is available on request.

Boyer Park Restaurant offers a relaxing atmosphere and a varied menu. Covered shelters accommodating 50 are available for rental for those special gatherings. A convenience and RV store is handy for those forgotten items. Boyer Park offers the **Snake River Trail** for



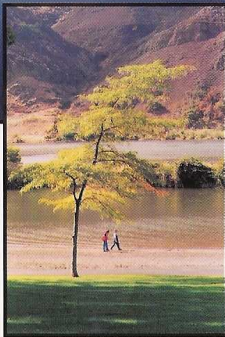
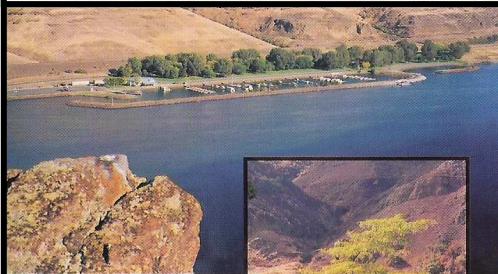
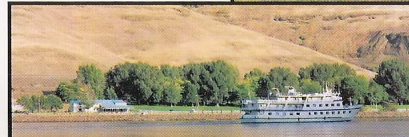
rollerblading, biking or a leisurely walk.

The enclosed swimming area, sandy beach, and picnic facilities make a perfect setting for the gathering of family and friends.

Overnight camping sites have all the extras... with water, electricity, sewer hookups, garbage collection, dump station for holding tanks, hot showers, rest rooms, laundry facilities, and picnic tables.

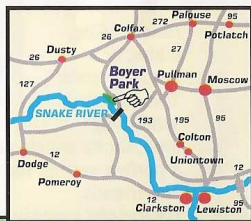
All facilities are open 7 days a week from mid-April until mid-October.

Lower Granite Lock and Dam is 2 miles from Boyer Park. The Visitor Center contains a Fish Viewing Room and Counting Station.



Boyer Park and Marina is a great place to be on a hot and sunny day!

This 140 acre site is situated on the scenic Snake River about 20 miles southeast of Pullman, Washington and offers many kinds of recreational enjoyment from fishing, boating, swimming, camping, picnicking to just spending a lazy day on the beach.



Come to the KBARA Camp Out & Annual Meeting at beautiful Boyer Park & Marina, Colfax, WA on the Snake River, just downriver from the Lower Granite Dam.

POTLUCK DINNER: Saturday, July 12, 2008, 5PM

ANNUAL MEETING: Following the potluck dinner, around 6PM, July 12, 2008

ACTIVITIES: President Bob, W7HFI's interesting historical recount of this area of the Snake River; presentation of the Moe-Checkin Award, & more.

TALK-IN FREQUENCY: 146.74 MHz (-) repeater & 146.520 MHz simplex

DIRECTIONS TO BOYER PARK: from Spokane drive south on Hwy. 195 to Colfax; drive through town on Main St., following the sign to Almota going up the hill (just past Eddy's Chinese Restaurant on your right); continue to follow the signs to Almota & Boyer Park/Lower Granite Dam; drive time about 1 1/2 hours & 77 miles from Spokane. From Pullman, & points south, from Hwy. 195 at Pullman, take Hwy 194 west, following the signs to Almota & Boyer Park/Lower Granite Dam.

INFO ABOUT BOYER PARK & MARINA: please visit www.bpark.biz; partial hookup sites from \$25-\$26.95 per night, tents \$13; sites available Friday, 7/11 3PM to 7/13 2PM; for reservations contact Betsy, N7WRQ, phone: 509-448-5821, e-mail: n7wrq@aol.com

continued alternating between the resin and the cloth for about four sheets. I let it dry solid, then popped it out with a screwdriver in order not to damage the form or the fiberglass. This made one half of the fiberglass form. I repeated this process again to make the form for the bottom side-- I took the dried form and reversed it so I would have a top and bottom. I then put a 2" piece of muffler pipe, bent in the middle, and whittled out a hole in each side so that I could stick a piece of steel down the center to put the antenna in. I seamed the pipe to the two forms, one on top of each other, and cemented it to the form at the bottom and top. I used fiberglass putty to seal it. I next cemented the sides of it to make a tube out of it. I also used putty to build up around the bottom to make a form all the way around it that was a 1/4 " thick and 3/8" high. After that, I got a piece of black plastic to make the back out of it . After the antenna was mounted on the inside, I put the piece of plastic in and fastened it on to 18 6x32 nuts and bolts. I used a grinder on the plastic to form the back of it. This took about 1 1/2 months due to the need of slowly drying the fiberglass. I suggest you do it when the weather is 60 degrees or warmer. It took about 8 jars of

fiberglass cloth 36 inches wide, 3 gallons of fiberglass resin, assorted brushes, sand paper, acetone and gloves. You need keep the resin off your hands!! I finished it off with 3 more coats of fiberglass resin, and the end result was a strong form for the antenna that is on Mica peak. This will help to protect it from snow and rain!

KBARA Officer Election, 2008

Absentee ballot for those members not able to attend the annual meeting

Please select the candidate listed, or write in a name (after having first received their permission); please mail to KBARA, PO Box 30801, Spokane WA 99223-3013 prior to July 12, 2008.

- President** Bob Lemon, W7HFI
- _write in
- Vice President** Ken Crosswhite, KD7DDQ
- _write in
- Secretary** Mark Van Winkle, KE7HPT
- _write in
- Treasurer** Betsy Ashleman, N7WRQ
- _write in

Please remember to renew your KBARA membership for 2008

Name _____

Call Sign _____

Address _____

City/State _____ Zip _____

Telephone _____ Amount Paid _____

E-Mail _____ ARRL Member? _____

Would you rather receive the KBARA newsletter by e-mail as a PDF file rather than by the postal service?

____ YES ____ NO

Dues are a minimum of \$15.00 per year for individuals and \$20.00 for a family (all must be living at the same address), but any amount will be greatly appreciated. Dues are due January of each year. If they are paid between September 1 - December 31, they will be applied through the entire following year. And any additional amount will be gratefully accepted to the Repeater Fund. To support KBARA, please send your contributions to: **KBARA, PO Box 30801, Spokane WA 99223-3013** Please visit our KBARA website for more information: **http: www.kbara.org**

KBARA Membership / Support Information

The KBARA repeater system consists of several privately owned linked Amateur Radio repeaters. It covers an area from northeastern Washington to northeastern Oregon, and from western Montana to central Washington. The KBARA system is also part of the Evergreen Intertie, an interconnected group of repeaters located in western Washington and Oregon. The primary purpose of the KBARA repeaters is to provide a means for emergency communications within the above areas, and secondarily for routine radio traffic. It makes possible a single system of mobile communications coverage, extending the limited range provided by any single repeater operation.

The KBARA FM repeaters operate in the VHF bands and are linked by UHF radios. The repeaters' frequencies, call signs, locations and owners are as follows:

KB7ARA REPEATERS

146.74 W7HFI	Kamiak Butte, near Pullman, WA, owned by Bob, W7HFI, & John, W7OE
147.02 N7LVO	Lookout Pass on I-90 on the Idaho-Montana border, owned by Neil, N7LVO & John, W7OE
147.28 KD7DDQ	Pikes Peak in the Blue Mountains, southeast of Walla Walla, WA, owned by Ken, KD7DDQ
147.36 N1NG	Stensgar (Stranger) Mountain, near Chewelah, WA, owned by Mike, N1NG, & John, W7OE
147.38 W7OE	Mica Peak, east of Spokane, WA, owned by John, W7OE
223.90 AK2O	Stensgar (Stranger) Mountain, near Chewelah, WA, owned by Karl, AK2O
444.35 N1NG	Mica Peak, east of Spokane, WA, with a 192.8 Hz tone, owned by Mike, N1NG
IRLP Node #3957 N1NG	South Hill of Spokane, WA, owned by Mike, N1NG

All licensed Amateur Radio operators are welcome to use this open repeater system. Your support would also be greatly appreciated. Please visit these websites for more information: <http://www.kbara.org> and visit <http://groups.yahoo.com/group/evergreenintertie>

To support KBARA, please send your contributions to: KBARA, PO Box 30801 Spokane WA 99223-3013	Annual support is \$15 per calendar year for a single membership and \$20 for a family membership. Dues are due in January of each year and if paid between September 1 and December 31, they will be applied through the entire following year. Also, any contribution will be gladly accepted to the Repeater Fund.
--	---

KBARA

KAMIAK BUTTE AMATEUR REPEATER ASSOCIATION

PO Box 30801

Spokane WA 99223-3013